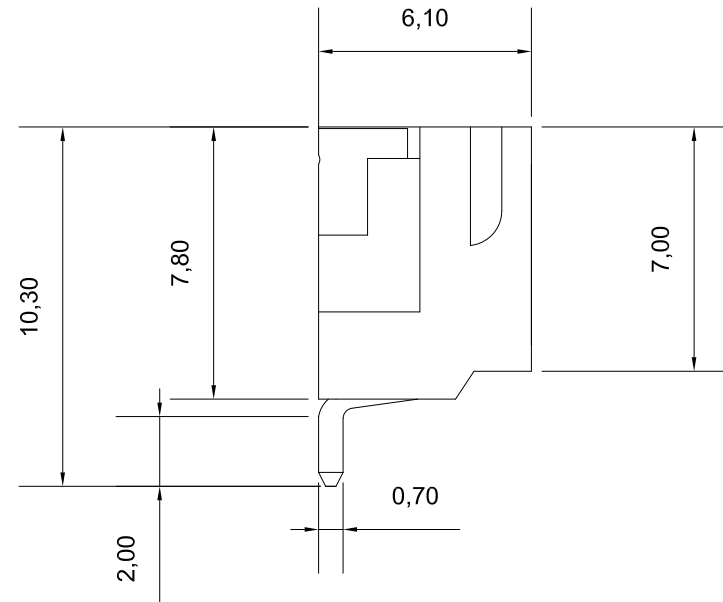
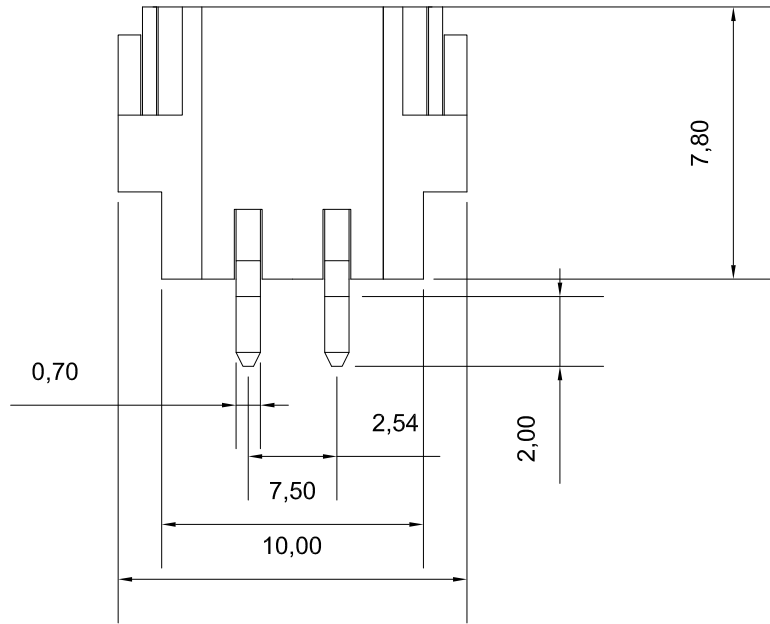
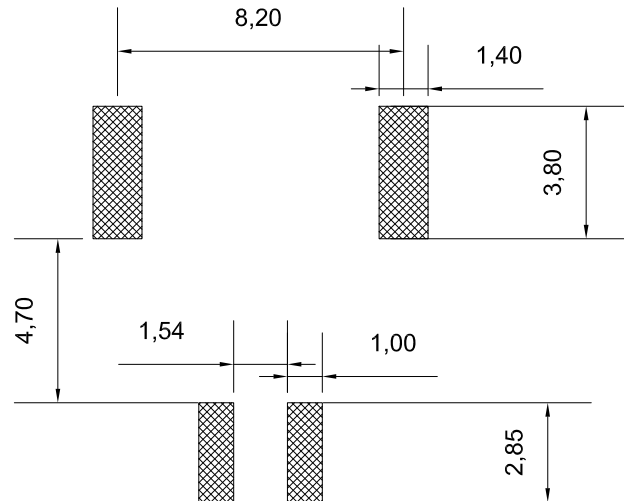


# 2 PINS 2.54 Pitch SMD Horizontal Type

Ver	Date	Description
1.0	July-18-2013	Preliminary Release



## PCB LAYOUT



### Electrical Performance:

Rated Current: 2.0A

Rated Voltage: 50V

Dielectric: 1000V

Insulation Resistance: 1000M  $\Omega$

Contact Resistance: 30m  $\Omega$

Operating Temp: -20°C ~ +85°C

Plastic Material: PA66, UL94V-0

Pin Material: Phosphor Bronze

 <b>旭日东方科技有限公司</b> <b>EastRising Technology Co.,Ltd.</b> <small>buy-diplay.com TEL: +86-755-33503873 FAX: +86-755-33507642-801</small>		<b>CD</b>
	UNIT: MM	SIZE: A4
	SHEET: 1 OF 1	
<b>Part Number for Order: ER-CON2.54-2P-SMD</b>		
DRAWN BY : Jim	CHECKED BY: Tony	APPROVED BY : Liu