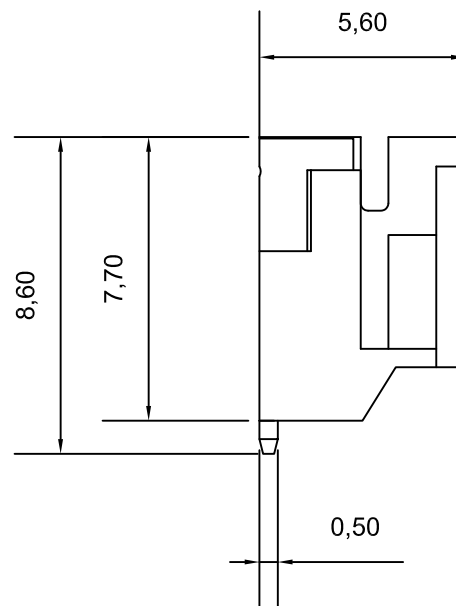
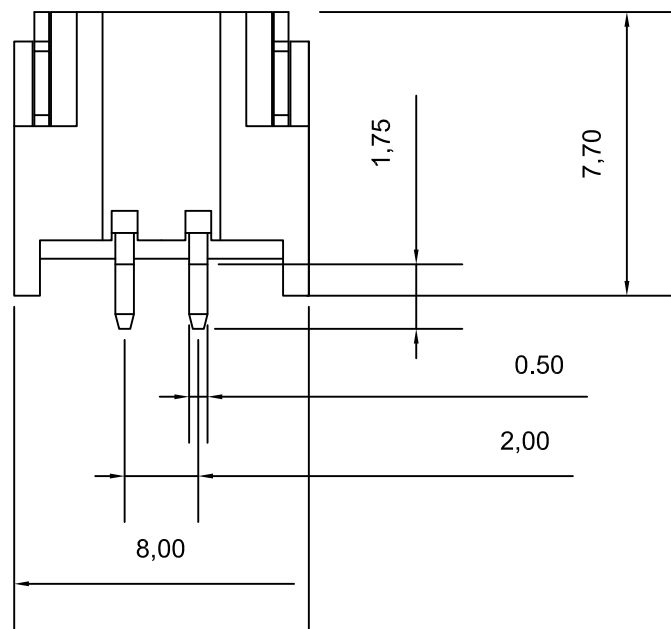
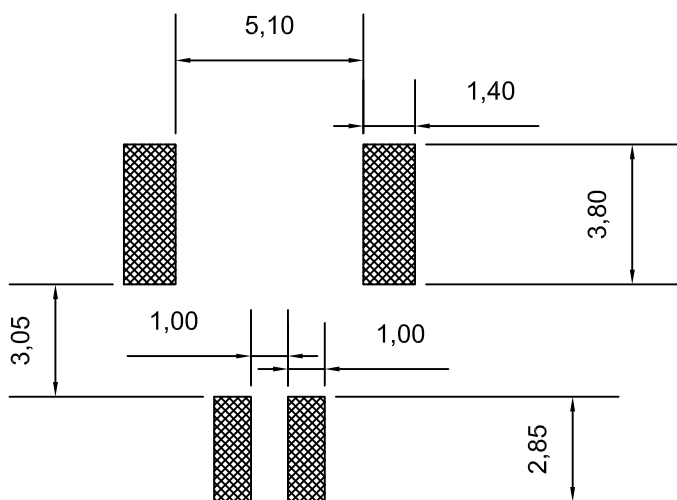


2 PINS 2.0 Pitch SMD Horizontal Type

Ver	Date	Description
1.0	July-26-2012	Preliminary Release



PCB LAYOUT



Electrical Performance:

Rated Current: 2.0A

Rated Voltage: 50V

Dielectric: 1000V

Insulation Resistance: 1000MΩ

Contact Resistance: 30mΩ

Operating Temp: -20°C ~ +85°C

Plastic Material: PA66, UL94V-0

Pin Material: Phosphor Bronze

 旭日东方科技有限公司 EastRising Technology Co.,Ltd. <small>www.lcd-china.com TEL: +86-755-33503873 FAX: +86-755-33507642-801</small>		CD
	UNIT: MM	SIZE: A4
	SHEET: 1 OF 1	
Part Number for Order: ER-CON2.0-2P-SMD		
DPAWN BY : Jim	CHECKED BY: Tony	APPROVED BY : Liu